

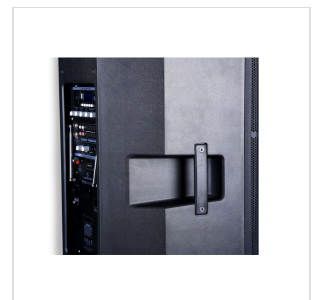
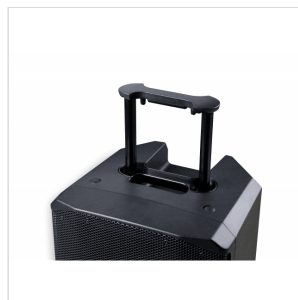
PROVIBE 15AIR

15" 2-WAY PORTABLE PA SYSTEM WITH BATTERY, TROLLEY AND MOBILE APP

ProVibe 12Air is certainly inspired by Soundsation's style in making compact PA systems, but it's also a turning point with renewed look and professional features. Battery or power supply, trolley with telescoping handle, two VHF wireless microphones, Player with USB/SD-card/Bluetooth, Mic/Line inputs, Echo effect, 5-Band EQ are combined in a lightweight yet rough and elegant housing. Control via free **"Go-Sound Air"** app for Android® and iOS® devices allows your device to play your music, but also remotely control volume, EQ and Aux input.

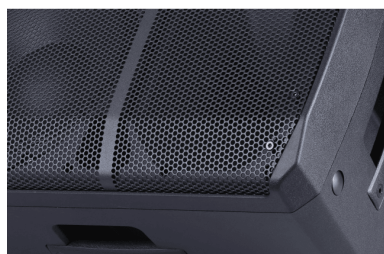
The 12" woofer and 1" compression driver are driven by a Class AB amplifier with peak power up to 800W. The power supply, in addition to mains cable and internal rechargeable battery with up to 7 hours duration, is also possible with 12V DC auxiliary input, like a car battery.

The housing, with stylish and professional look, has a vented architecture with bass-reflex ports in the lower corners near the woofer. The symmetric HF waveguide has 90° (H) x 60° (V) coverage. The speaker can be used as stage monitor, thanks to the 45° angles of housing rear. Finally, there are 3 M8 attachment points for hanged mounting, and 36mm hole for pole or tripod mounting.





HIGHLIGHTS



ELEGANCE, COMPACTNESS AND RELIABILITY. IN SHORT: PROVIDE!

Its purpose is not only to emit sounds and vibrations, but also to create music, convey emotions, exchange ideas, and promote knowledge. At Soundsation, we believe that ProVibe should align with contemporary aesthetic canons, characterized by essential and elegant lines. We believe that beauty should not compromise practicality or longevity. We have created a new range of active loudspeakers that take these concepts to a professional level, starting with simple vibration. In short: ProVibe!

KEYWORD: PORTABILITY

ProVibe Air is a significant advancement towards the idea of complete freedom, without any limits to communication, music, or sharing emotions.

It has an internal battery that can be powered by a car battery or external power source, providing an operating autonomy from 6 up to 7 hours depending on the model. Cables are practically unnecessary with one or two wireless microphones (according to the model) and the USB, SD-Card and Bluetooth media player. However, traditional cable connection is still possible through the 1/4" jack and RCA inputs for musical instruments, microphones or other sources that require it.



GO-SOUND AIR APP AND BLUETOOTH



Nowadays, our tablets and mobile phones have become the primary tools for music, parties, and other occasions. Some of the latest devices no longer have an analogue output, which means that they require adapters (often bulky and expensive) or Bluetooth interfaces to connect to regular audio speakers. ProVibe Air's Digital Media Player provides solutions to these and many other needs. In addition to the standard Bluetooth connection and USB/SD-Card slots, the player's functions can be controlled through the free Go-Sound Air app for Android® and iOS®, directly from a tablet or smartphone.

PRODUCT DETAILS

KEY FEATURES

Sturdy and Stylish Polypropylene Housing

Rechargeable Battery for up to 7 hours Operation

800W Peak Power

Dual VHF Wireless Handheld Microphone

USB/SD-Card/Bluetooth Player

Go-Sound Air App for Android®/iOS®

Infrared Remote Control

36 mm standard pole mount

Trolley with Telescopic Handle

SPECIFICATIONS

Speaker Type	15" 2-Way Portable PA System with Battery, Trolley and Mobile App
Frequency response	60Hz-19KHz
Max. SPL	114 dB
LF	15"
HF	1" Compression Driver
Directivity (HxV) / Horn Type	90° x 60° - Symmetric
Amp. (Program/Peak)	400W / 800W - Class-AB
Controls	Mic1&2 level, Line level, Echo level, BT/MP3 level, Master level, Wireless Mics On, W. Mic1 level, W. Mic2 level
EQ	5-Band Graphic EQ, 100Hz, 330Hz, 1KHz, 3,3KHz, 10KHz (+/- 12dB)
Connections	Mic 1&2 6.3mm TS Jack, Line In L&R RCA, Line Out L&R RCA
Media player	USB, SD-Card, BT Audio Streaming, LCD Display
App Control	Auxiliary BT connection to Go-Sound Air App for Android®/iOS®
Mains Power	230VAC-50Hz
Add. Power	External 12VDC (No charge function)
Rechargeable Battery	12V-7Ah Lead Battery
Charge/Discharge Cycle	5 hours / 7 hours
Wireless Microphones	MIC1 - VHF 174.4MHz / MIC2 175 MHz
Wireless Mic. Frequency Response	40Hz – 16kHz / ±3dB
Transmitter Power	10mW
Modulation Type	FM
Battery Voltage	3V (2x1.5V AA-Type Batteries)
Transmitter Continuous Using	7 hours
Trolley & Handles	Trolley System with 2 Handles on sides and 1 Handle telescopic on top

Pole Mount	Standard D36 mm
Stage Monitor Use Angle	45° - 45°
Speaker Dimension (WxHxD)	418 x 685 x 379 mm
Packing Dimension (WxHxD)	470 x 730 x 430 mm
Net Weight	16.0 kg
Gross Weight	18.2 kg