

HYPER BASS 18 PRO

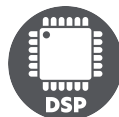
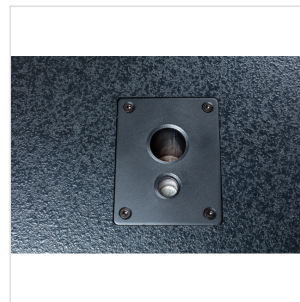
18" 3600W PEAK POWER ACTIVE SUBWOOFER

The Hyper Bass 15 Pro and Hyper Bass 18 Pro are high-performance active subwoofers designed to deliver exceptional low-frequency reinforcement for professional sound applications. Engineered with power and precision in mind, these subwoofers provide an impressive 1200W RMS (3600W peak) output, making them ideal for live events, DJ performances, and large-scale venues.

With frequency responses ranging from 35Hz to 150Hz and capable of reaching maximum SPL levels of 127 dB (Hyper Bass 15 Pro) and 130 dB (Hyper Bass 18 Pro), they produce deep, tight bass that complements full-range audio systems.

The 15" (Hyper Bass 15 Pro) and 18" (Hyper Bass 18 Pro) robust woofers are driven by a Class-D integrated amplifier, ensuring powerful, distortion-free performance even at high sound pressure levels.

Whether for concerts, clubs, or large events, the Hyper Bass 15 Pro and Hyper Bass 18 Pro offer the power, durability, and flexibility required by modern audio professionals.



HIGHLIGHTS

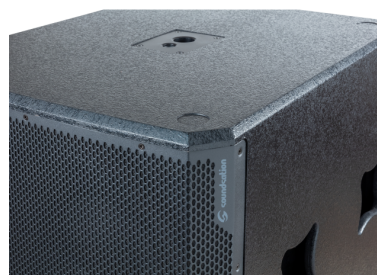


DSP FOR VERSATILITY AND MAXIMUM SECURITY

DSP-based crossover with 90 or 120Hz cutoff and 0° or 180° phase. Balanced XLR stereo inputs and outputs. Outputs can function as either bandpass or filtered outputs by pressing the Output Mode button. II DSP provides maximum thermal, signal and overdrive protection under all conditions.

STRONG AND CLEVER

Constructed with 18mm plywood and protected by a rugged steel grille, the subwoofers are built to withstand the rigors of professional use. Additional features include four recessed handles for easy transport, an M20/36mm dual pole-mount adapter for satellite speakers, and optional (not included) rear-mounted castors for added mobility.



PRODUCT DETAILS

KEY FEATURES

High-performance Active Subwoofer

Class-D integrated amplifier delivering up to 1200W RMS and 3600W Peak power

Maximum SPL level of 130 dB

Phase control (0° / 180°) for improved low-frequency performance

Adjustable crossover frequency (120Hz / 90Hz)

Selectable output modes: Link or X-Over Out

M20/36mm dual pole-mount adapter

M8 holes on the rear panel for optional castor installation

SPECIFICATIONS

Frequency response	30Hz-150Hz
Power output (RMS/peak)	1200W/3600W
Amplification	Class D
Max. SPL (peak)	130 dB
LF transducer	18"Woofer, 4" Voice coil
LF transducer Impedance	8ohms
Controls	Sub Level, Phase (0° / 180°), X-Over Frequency (120Hz / 90Hz, Output Mode (Link / X-Over Outs)
Connectors	Balanced Inputs (XLR), Balanced Outputs (XLR), Power Input (VDE)
Cabinet construction	18mm Plywood
Cabinet surface	Polyurea
Grille Material	Steel
Grille Thickness	1.5 mm
Handles	4 recessed (2 on each side)
Pole Mount	M20 Adapter on Top
Castors	Optional (rear panel mounting)
Subwoofer Dimensions (W*H*D)	558 x 707 x 700 mm
Package Dimensions (W*H*D)	785 x 643 x 795 mm
Net Weight	49.5 kg
Gross Weight	55 kg