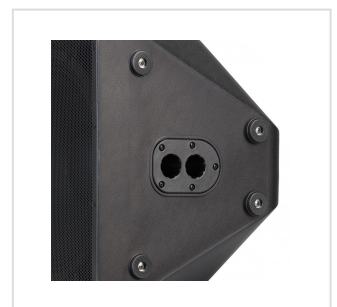


HYPER-PRO 12ACX

12" 1600W Peak 2-way Powered Loudspeakers with DSP

The Bi-Amplified Active speakers of the HYPER-PRO ACX series are part of the high range of SOUNDSATION Pro Audio products. Peak powers of 1600 W and 1800W respectively for 12" and 15" models, selected transducers, CELESTION® compression drivers, powerful DSP: all the ingredients cleverly combined to offer the best even to the most demanding professionals. HYPER-PRO ACX series 12" and 15" woofers sound punchy and loud; the 1.4" driver lets them sound crystal clear. Sound control via the DSP is really simple. By pressing the PRESET switch you can choose between 4 audio programs (LIVE, DJ, SPEECH, MONITOR); the character of the sound will change and the corresponding LED will show the selected mode. The rear panel, organized in a very simple way and with separately controllable inputs, allows the choice of devices to be connected as a microphone, a mixer, an instrument, a CD player, a smartphone etc. In the three panel sections, input levels can quickly be set with gain controls independently of each other.

Status: New



KEY FEATURES

Bi-Amped Active Speaker

1600W Peak Power

Amplifier Class-D (low-frequencies); Class-AB (high-frequencies)

Celestion® 1.4" Compression Driver

4-Preset DSP (Live, DJ, Speech, Monitor)

Balanced MIC / Line XLR input with Thru XLR output, Line Stereo input with 2x ¼" jack, Stereo input with Mini-Jack and RCA, all with independent level controls

Link output with Mono / Stereo selection

Blue Front LED with On/Off Switch

Sturdy Polypropylene Enclosure with black anti-scratch paint

Flyable 3 x M10 (2 on Top, 1 on Rear)

Handles 1 on top, 2 on sides

Dual pole mount Standard 36 mm, 0° and 7°

MORE SPECIFICATIONS

Frequency Response	50Hz - 20kHz / -10dB
Max SPL	134 dB
Low-freq. Transducer	12" Woofer
High-freq. Transducer	Celestion® 1.4" Compression Driver
Coverage	90° x 90°
Low-Frequency Amplifier	Class-D 350W RMS - 1400W Picco
High-Frequency Amplifier	Class-AB 50W RMS - 200W Picco
AC Mains	100-120VAC/220-240VAC
Power Consumption (Average/Peak)	800W / 1600W
Fuse	T6.3AL 250V (100-120V) / T3.15AL250V (220-240V)
DSP	4 preset (Live, DJ, Speech, Monitor)
Input Connections	1x XLR connector, 2x 63mm Jack, 1x Mini-Jack, 1x RCA Pair
Output Connectors	1x XLR Thru Output (Input 1), 1x XLR Link Output with Mono/Stereo selection
Housing Material	Polypropylene
Grille	Steel/1.2mm
Flyable	3 x M10 points (2 on top, 1 on rear)
Handles	2 on sides; 1 on top
Dual tripod/pole hole	Standard D36mm, 0° and 7°
Speaker Size (WxHxD)	362 x 597 x 347 mm
Packing Size (WxHxD)	405 x 645 x 395 mm
Speaker Weight	15.5 kg
Carton Weight	17 kg