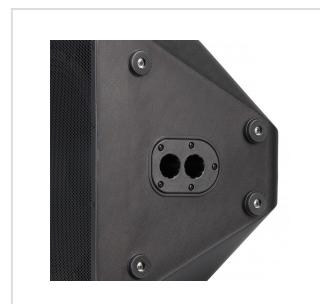


# *HYPER-PRO 15ACX*

15" 1800W Peak 2-way Powered Loudspeakers with DSP

The Bi-Amplified Active speakers of the HYPER-PRO ACX series are part of the high range of SOUNDSATION Pro Audio products. Peak powers of 1600 W and 1800W respectively for 12" and 15" models, selected transducers, CELESTION® compression drivers, powerful DSP: all the ingredients cleverly combined to offer the best even to the most demanding professionals. HYPER-PRO ACX series 12" and 15" woofers sound punchy and loud; the 1.4" driver lets them sound crystal clear. Sound control via the DSP is really simple. By pressing the PRESET switch you can choose between 4 audio programs (LIVE, DJ, SPEECH, MONITOR); the character of the sound will change and the corresponding LED will show the selected mode. The rear panel, organized in a very simple way and with separately controllable inputs, allows the choice of devices to be connected as a microphone, a mixer, an instrument, a CD player, a smartphone etc. In the three panel sections, input levels can quickly be set with gain controls independently of each other.



## KEY FEATURES

### Bi-Amped Active Speaker

**1800W Peak Power**

**Amplifier**

Class-D (low-frequencies); Class-AB (high-frequencies)

**Celestion® 1.4" Compression Driver**

**4-Preset DSP (Live, DJ, Speech, Monitor)**

**Balanced MIC / Line XLR input with Thru XLR output, Line Stereo input with 2x ¼" jack, Stereo input with Mini-Jack and RCA, all with independent level controls**

**Link output with Mono / Stereo selection**

**Blue Front LED with On/Off Switch**

**Sturdy Polypropylene Enclosure with black anti-scratch paint**

**Flyable**

3 x M10 points (2 on top, 1 on rear)

**Handles**

1 on top, 2 on sides

**Dual pole mount**

D36mm Standard, 0° and 7°

## MORE SPECIFICATIONS

**Frequency Response**

45Hz - 20kHz / -10dB

**Max SPL**

136 dB

**Low-freq. Transducer**

15" Woofer

**High-freq. Transducer**

Celestion® 1.35" Compression Driver

**Coverage**

90° x 90°

**Low-Frequency Amplifier**

Class-D 400W RMS - 1600W Picco

**High-Frequency Amplifier**

Class-AB 50W RMS - 200W Picco

**AC Mains**

100-120VAC/220-240VAC

**Power Consumption (Average/Peak)**

900W / 1800W

**Fuse**

T6.3AL 250V (100-120V) / T3.15AL250V (220-240V)

**DSP**

4 preset (Live, DJ, Speech, Monitor)

**Input Connections**

1x XLR connector, 2x ¼" Jack, 1x ?" Mini-Jack, 1x RCA Pair

**Output Connectors**

1x XLR Thru Output (Input 1), 1x XLR Link Output with Mono/Stereo selection

**Housing Material**

Polypropylene

**Grille**

Steel/1.2mm

**Flyable**

3 x M10 points (2 on top, 1 on rear)

**Handles**

2 on sides; 1 on top

**Dual tripod/pole Hole**

D36mm Standard, 0° and 7°

**Speaker Size (WxDxA)**

445 x 376 x 698 mm

**Packing Size (WxDxH)**

490 x 425 x 745 mm

**Speaker Weight**

20.5 kg

**Carton Weight**

23.0 kg